



FOLLOW US

@MANNAPROHOMESTEAD | @CITYYOLKS

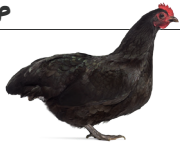


FOR MORE INFO VISIT

WWW.MANNAPRO.COM

AUSTRALORP

Average of 5 large, brown eggs a week
Size: 7 - 8 lbs.
Varieties: Black
Cold Hardy: Yes



EASTER EGGER

Average of 4 large, blue, green or pink eggs a week
Size: 5 ½ - 6 ½ lbs.
Varieties: Varies Widely
Cold Hardy: Yes



RHODE ISLAND RED

Average of 5 large, brown eggs a week
Size: 6 ½ - 8 ½ lbs.
Varieties: Red
Cold Hardy: Yes



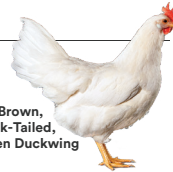
BARNEVELDER

Average of 3 large, brown eggs a week
Size: 6 - 7 lbs.
Varieties: Double Laced Partridge
Other varieties such as Black and Blue Laced are available in Europe
Cold Hardy: Yes



LEGHORN

Average of 3-4 large, white eggs a week
Size: 4 ½ - 6 lbs.
Varieties: White, Dark Brown, Black, Buff, Silver, Black-Tailed, Red, Columbian, Golden Duckwing
Cold Hardy: No



SILKIE

Average of 3 very small, cream eggs a week
Size: Bantam 2 - 2 ½ lbs.
Varieties: Black, White, Partridge, Buff, Blue
Cold Hardy: Yes



BRAHMA

Average of 3 medium-sized, brown eggs a week
Size: 9 ½ - 12 lbs.
Varieties: Dark, light, Buff
Cold Hardy: Yes



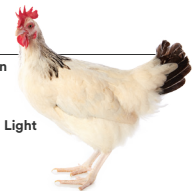
MARANS

Average of 3 large, dark brown eggs a week
Size: 6 ½ - 8 lbs.
Varieties: Black Copper, Silver Cuckoo, Golden Cuckoo, White, Wheaten, Birchen, Blue, More
Cold Hardy: No



SUSSEX

Average of 4 large, brown eggs a week
Size: 7 - 9 lbs.
Varieties: Speckled, Red, Light
Cold Hardy: Yes



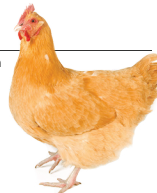
COCHIN

Average of 2 medium-sized, brown eggs a week
Size: 8 ½ - 11 lbs.
Varieties: Black, White, Partridge, Buff, Barred Brown, Golden Laced, Mottled, Silver Laced, Birchen, Blue, Columbian, Red
Cold Hardy: Yes



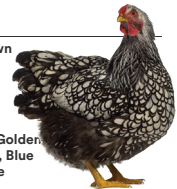
ORPINGTON

Average of 3 large, brown eggs a week
Size: 8 - 10 lbs.
Varieties: Buff, Black, Blue, White
Cold Hardy: Yes



WYANDOTTE

Average of 4 large, brown eggs a week
Size: 6 ½ - 8 ½ lbs.
Varieties: White, Black, Buff, Partridge, Silver Penciled, Silver Laced, Golden Laced, Columbian, Blue, Blue Laced Red, Barred, More
Cold Hardy: Yes



DELAWARE

Average of 4 large, brown eggs a week
Size: 6 ½ - 8 ½ lbs.
Varieties: White
Cold Hardy: Yes



PLYMOUTH ROCK

Average of 4 large, brown eggs a week
Size: 7 ½ - 9 ½ lbs.
Varieties: Barred, White, Buff, Silver Penciled, Partridge, Columbian, Blue, Black
Cold Hardy: Yes



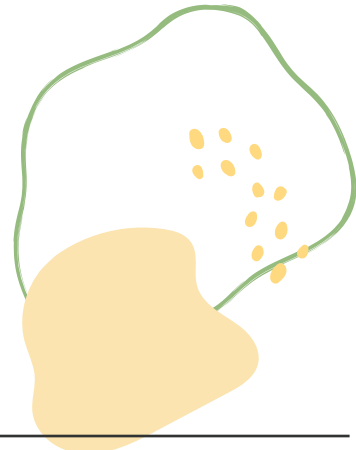
BELGIAN BEARDED D'UCCLE

Average of 2 very small, cream eggs a week
Size: Bantam 1 - 2 lbs.
Varieties: Mille Fleur, Black, Porcelain, Golden Neck, Mottled, Self Blue, White
Cold Hardy: No



POLISH

Average of 2 small, white eggs a week
Size: 4 ½ - 6 lbs.
Varieties: Black Crested White, White Crested Black, Golden, Silver, White, Buff Laced
Cold Hardy: No



Nurturing Life.™

NO MATTER WHAT ROLE THEY PLAY, WE'RE HERE TO MAKE THEIR LIVES THE BEST THEY CAN BE.